



INFORMATION ON THE FUNDS

KEY FIGURES

AUM in M. EUR : **3,203.03**
Class C

NAV per share as of 29/12/16 : 566.07
Reference currency : EUR
Valuation frequency : Daily

CHARACTERISTICS

AMF Category : Short-Term Money Market

Type of fund : UCITS
Inception date : 10-02-98
Ticker Bloomberg : *FINENTN FP*

INVESTMENT TERM :
1 month

RISK ANALYZES (On 1 year)

	Fund	Benchmark
Volatility	0.01	0.01
Sharpe Ratio	14.63	-0.60
Tracking Error (Ex-post)	0.01	-
Information Ratio	15.56	-
WAM	46	
WAL	110	

RETURNS EVOLUTION *

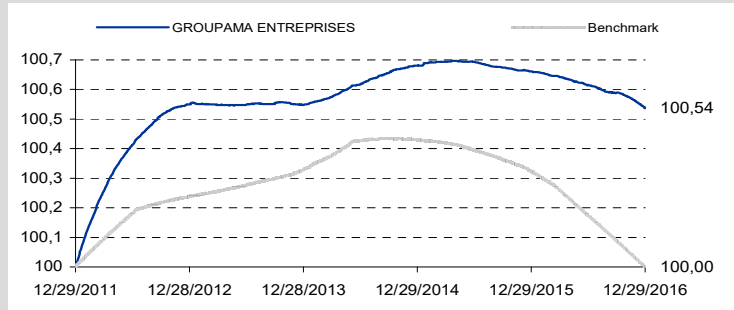
Annualised returns % (5 years)

Year	2015	2014	2013	2012	2011
Fund	-0.02	0.13	0.00	0.55	0.96
Benchmark	-0.11	0.10	0.09	0.24	0.88
Variation	0.09	0.03	-0.09	0.31	0.07

Cumulative returns in %

Period	1 month	YTD	1 year	3 years	5 years
	30-11-16	30-12-15	29-12-15	29-12-13	29-12-11
Fund	-0.02	-0.12	-0.12	-0.01	0.54
Benchmark	-0.03	-0.32	-0.32	-0.33	0.00
Variation	0.01	0.20	0.20	0.32	0.54

Returns 5 years (on a basis of 100)

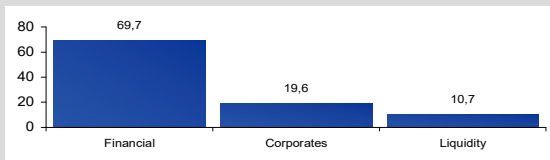


* Past performance does not guarantee future results.

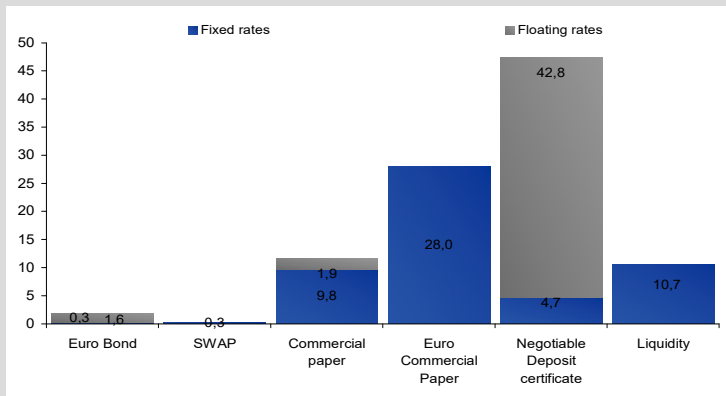
PORTFOLIO ANALYSIS as of 29/12/2016

GROUPAMA ENTREPRISES

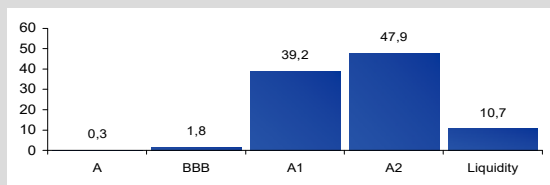
BREAKDOWN BY TYPE OF ISSUER (in % of the asset)



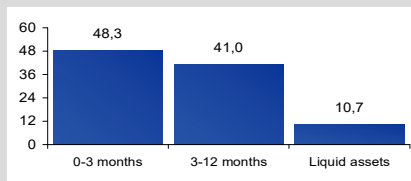
ASSET ALLOCATION (in %)



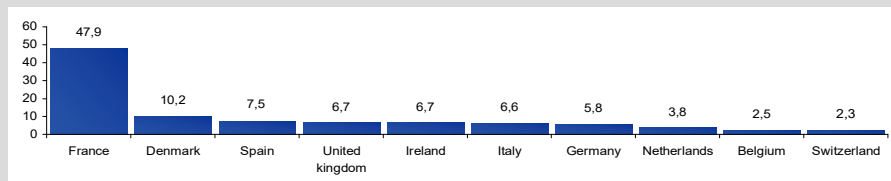
BREAKDOWN BY EQUIVALENT RATING CATEGORY * (in % of the asset)



BREAKDOWN BY MATURITY (in % of the asset)



GEOGRAPHICAL BREAKDOWN (in % of the asset)



* The fund manager uses its own analysis, which may rely on the skills of the internal credit analysis team to optimize the issuers' risk in the portfolio and on credit quality ratings issued by external entities.


Monthly Fact sheet as of 29/12/2016
ISIN N C FR0010288316

Benchmark : Capitalized EONIA

INFORMATION ON THE FUNDS
CONDITIONS OF MARKETING

Minimum initial subscription :	500 €
Following subscription :	In ten thousandths of share
Centralizer :	CACEIS BANK
Subscription conditions / repurchases :	Every day until 12 pm - NAV known - Payment D

FEES

Max subscription fees :	0.50%
Max redemption fees :	0.50%
Real management fees :	0,15 %

The detail of the fees covered by the fund is available in the funds' legal prospectus.

CONTACTS

ITALY- Groupama Asset Management SGR - Rome
 Alberico POTENZA - General Manager
 +39 06 80 66 02 61- apotenza@groupama-am.it
 Fabrizio SALVI
 +39 06 80.80.361- fsalvi@groupama-am.it

SPAIN - Portugal - ANDORRA - Groupama Asset Management - Madrid
 Iván DIEZ SAINZ - Country Manager
 +34 91 284 47 78 - idiezsainz@groupama-am.es
 Álvaro DE LINIERS - Institutional Business Development Iberia & Latam
 +34 91 284 47 78 - aliniers@groupama-am.es

LUXEMBOURG, BELGIUM - Groupama Asset Management - Paris
 Matthieu PAINTURAUD
 +33 1 44 56 77 72 - mpainturaud@groupama-am.com

SWITZERLAND- Groupama Asset Management
 Gaspard Theysset
 +33 1 44 56 66 65 - Gtheysset@groupama-am.com

Group relationship
 Corinne Foucoïn
 +33 1 44 56 79 07 - cfoucoïn@groupama-am.com
 Eric Mathieu
 +33 1 44 56 57 64 - emathieu@groupama-am.com
 Delphine Poupon
 +33 1 44 56 68 01 - dpoupon@groupama-am.com

LIMIT OF MODIFIED DURATION

Minimum	Maximum
0.00	0,5

Returns * history in % (5 years)

		January	February	March	April	May	June	July	August	September	October	November	December	Year
2016	Fund	-0.01	-0.01	-0.01	-0.01	-0.01	-0.01	-0.01	-0.01	0.00	-0.01	-0.02	-0.02	-0.12
	Benchmark	-0.02	-0.02	-0.03	-0.03	-0.03	-0.03	-0.03	-0.03	-0.03	-0.03	-0.03	-0.03	-0.32
2015	Fund	0.01	0.00	0.00	0.00	0.00	0.00	-0.01	-0.01	0.00	0.00	-0.01	0.00	-0.02
	Benchmark	0.00	0.00	0.00	-0.01	-0.01	-0.01	-0.01	-0.01	-0.01	-0.01	-0.01	-0.02	-0.11
2014	Fund	0.01	0.01	0.01	0.02	0.02	0.01	0.02	0.01	0.01	0.01	0.01	0.01	0.13
	Benchmark	0.02	0.01	0.02	0.02	0.02	0.01	0.00	0.00	0.00	0.00	0.00	0.00	0.10
2013	Fund	0.00	0.00	0.00	0.00	0.00	0.00	0.00	0.00	0.00	0.00	-0.01	0.00	0.00
	Benchmark	0.01	0.01	0.00	0.01	0.01	0.01	0.01	0.01	0.01	0.01	0.01	0.01	0.09
2012	Fund	0.11	0.08	0.07	0.07	0.05	0.04	0.04	0.03	0.03	0.02	0.01	0.01	0.55
	Benchmark	0.04	0.03	0.03	0.03	0.03	0.03	0.02	0.01	0.01	0.01	0.01	0.01	0.24

* Past performance does not guarantee future results.

Historical modifications of the benchmark (5 years)

No

Groupama Asset Management revises all the external data received.

The information contained in this document is provided purely for information purposes. Please consult the sales teams at Groupama Asset Management and its subsidiaries for a personalised recommendation. Any unauthorised use or distribution of this document, either in whole or in part, by any means whatsoever, is prohibited. Groupama Asset Management and its subsidiaries cannot be held responsible in the event of any alteration, deletion or falsification of the information contained in this document. The information contained in this publication is based on sources which we consider to be reliable. However, we cannot guarantee that it will be totally precise, complete, valid or relevant. This non-contractual document by no means constitutes a recommendation, a request for a bid or a purchase, sale or arbitration offer and must under no circumstances be interpreted as such. All investors must consult the fund prospectus/regulations or key investor information document (KIID) prior to any investment.

These documents and the latest period document can be obtained from Groupama Asset Management upon request.